



CAAC Design and Construction Update

2-15-2024



2024 Bond Projects

Meyers Pool

City of Arvada / Jeffco / Apex
OLC Designs – Saunders CMGC

Construction



Meyers Pool

City of Arvada / Jeffco / Apex
OLC Designs – Saunders CMGC

Construction



Evergreen HS – Pump House H&M – Single Track

Construction



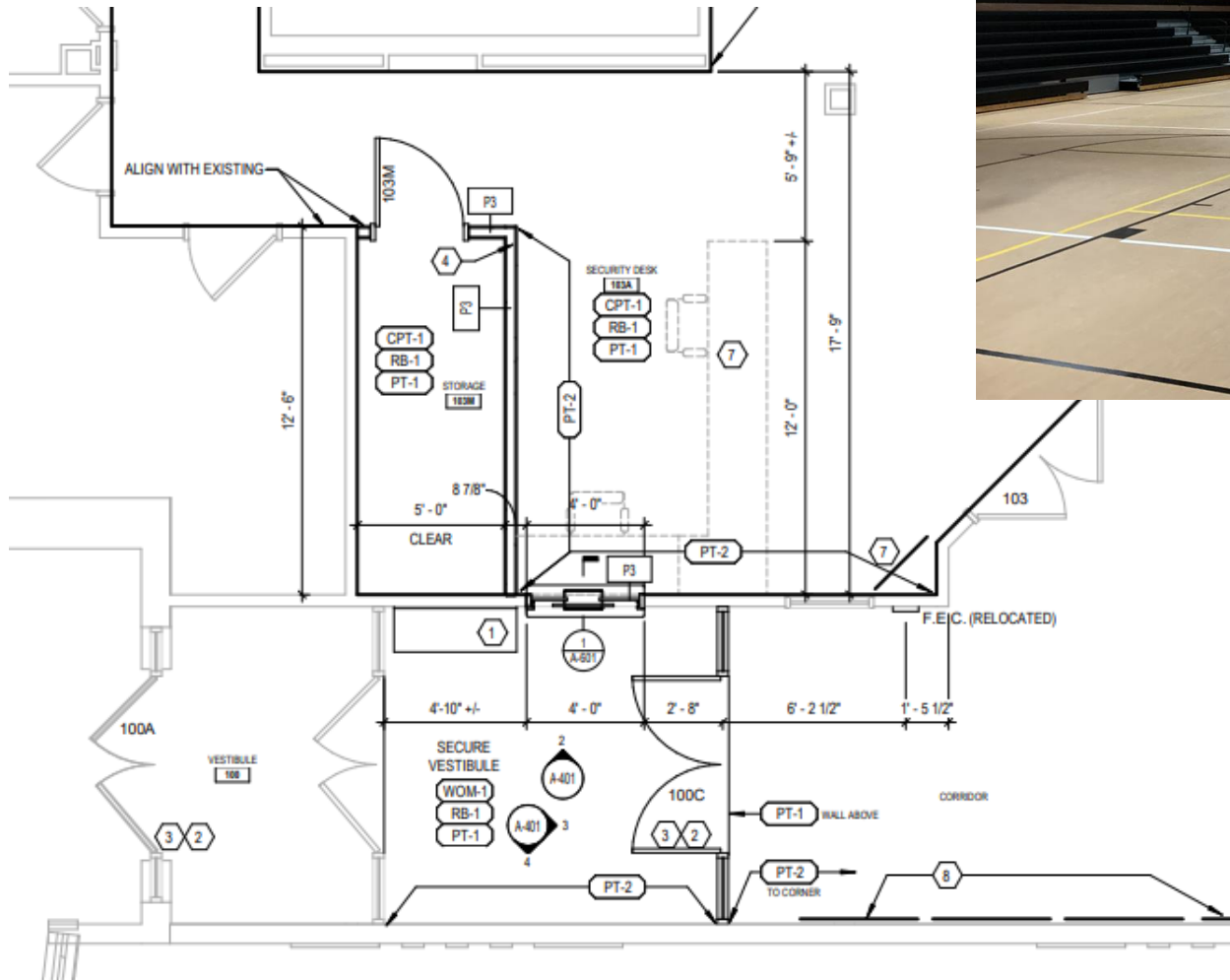
Efficiency Future Ready Wheat Ridge HS Eidos – GTC

Construction



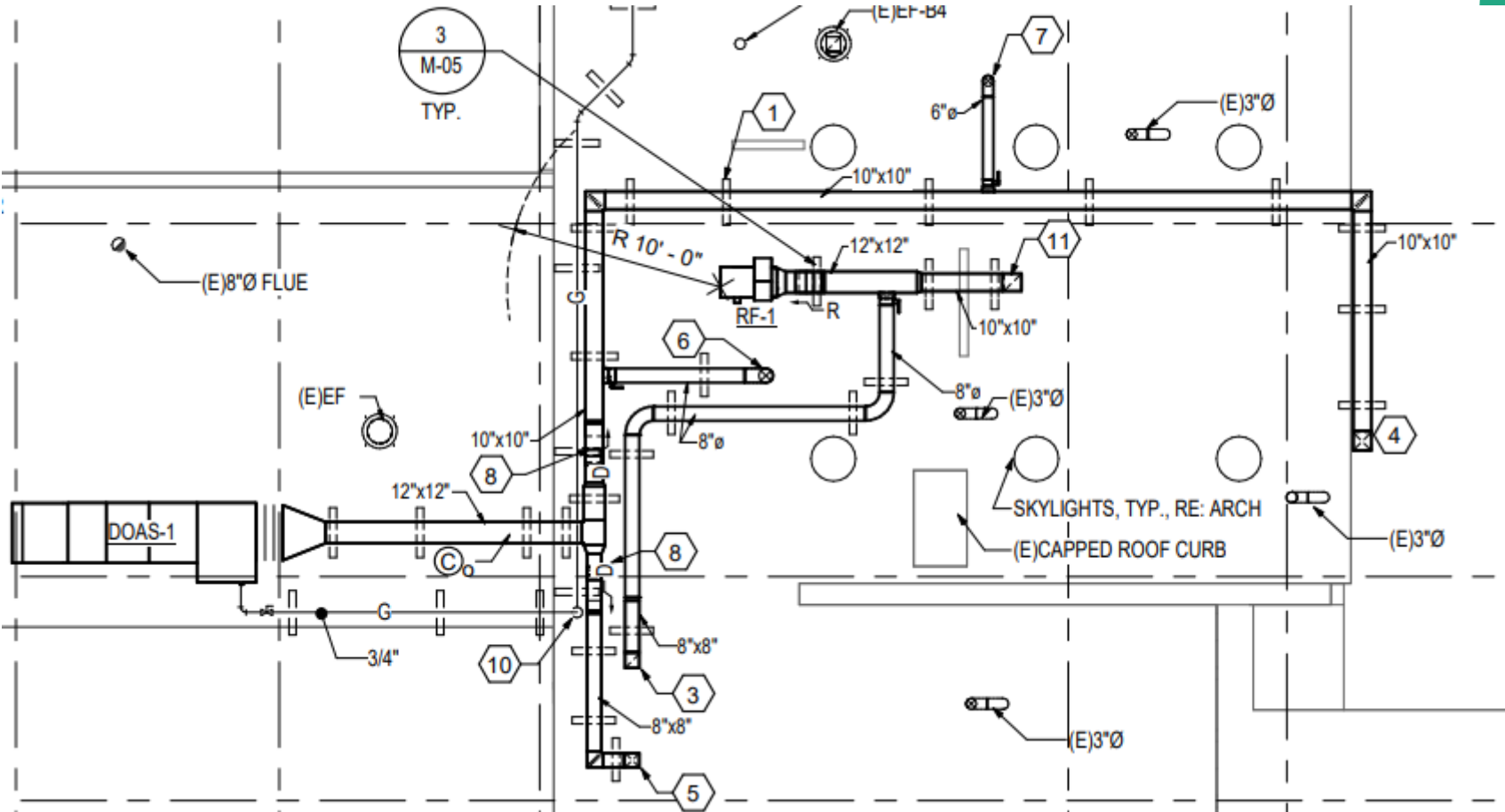
Drake MS – Efficiency Future Ready MOA – Calahan

Construction



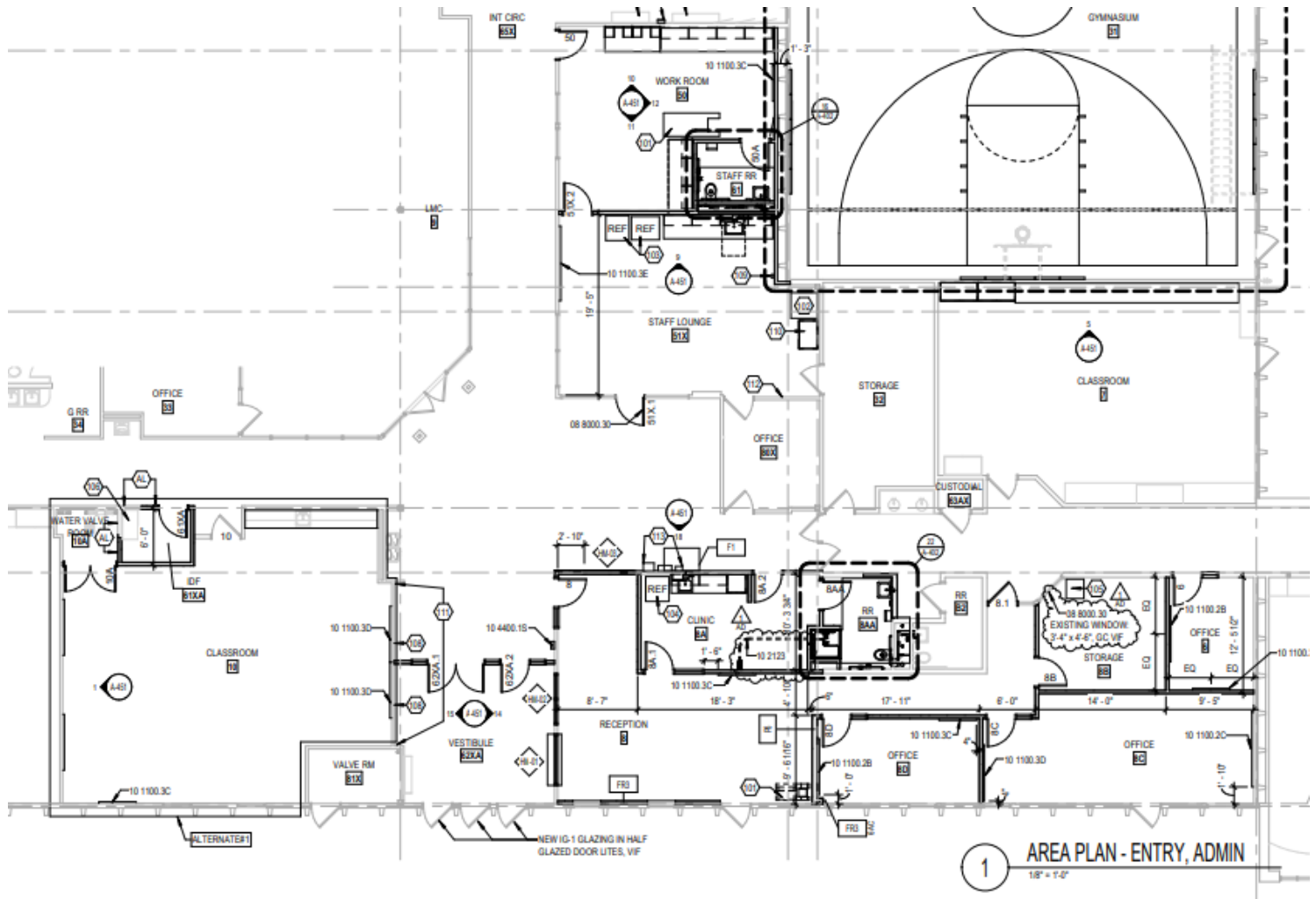
Parmalee ES – Admin Ventilation OZ – Single Track

Construction
Mobilized



Weber ES – Efficiency Future Ready MOA – Saunders

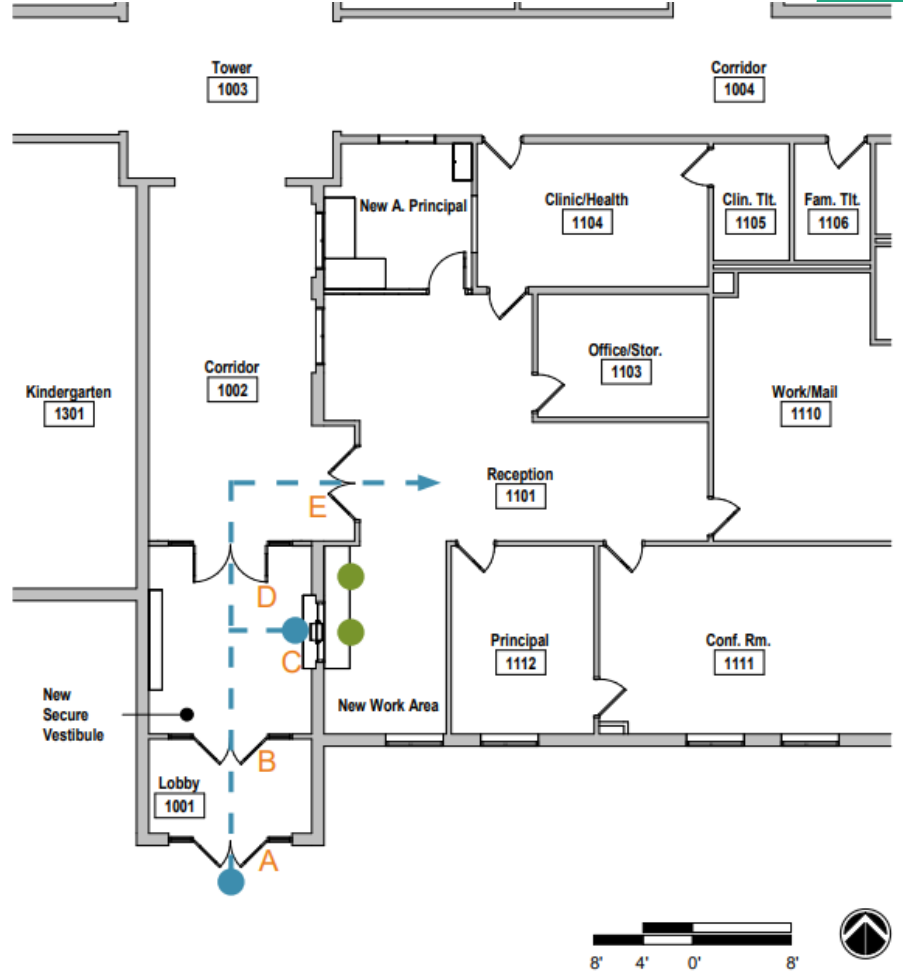
Construction



Meiklejohn ES – Efficiency Future Ready H&M – McCauley

SCHEMATIC PLAN

- A LOCKED DOOR W/ ENTRY CONTROL
- B UNLOCKED ENTRY DOOR
- C SECURE TRANSACTION WINDOW
- D LOCKED DOOR W/ ENTRY CONTROL
- E DOOR TO RECEPTION
- - - -> PATH OF TRAVEL
- SECURITY CHECKPOINT
- WORKSTATION



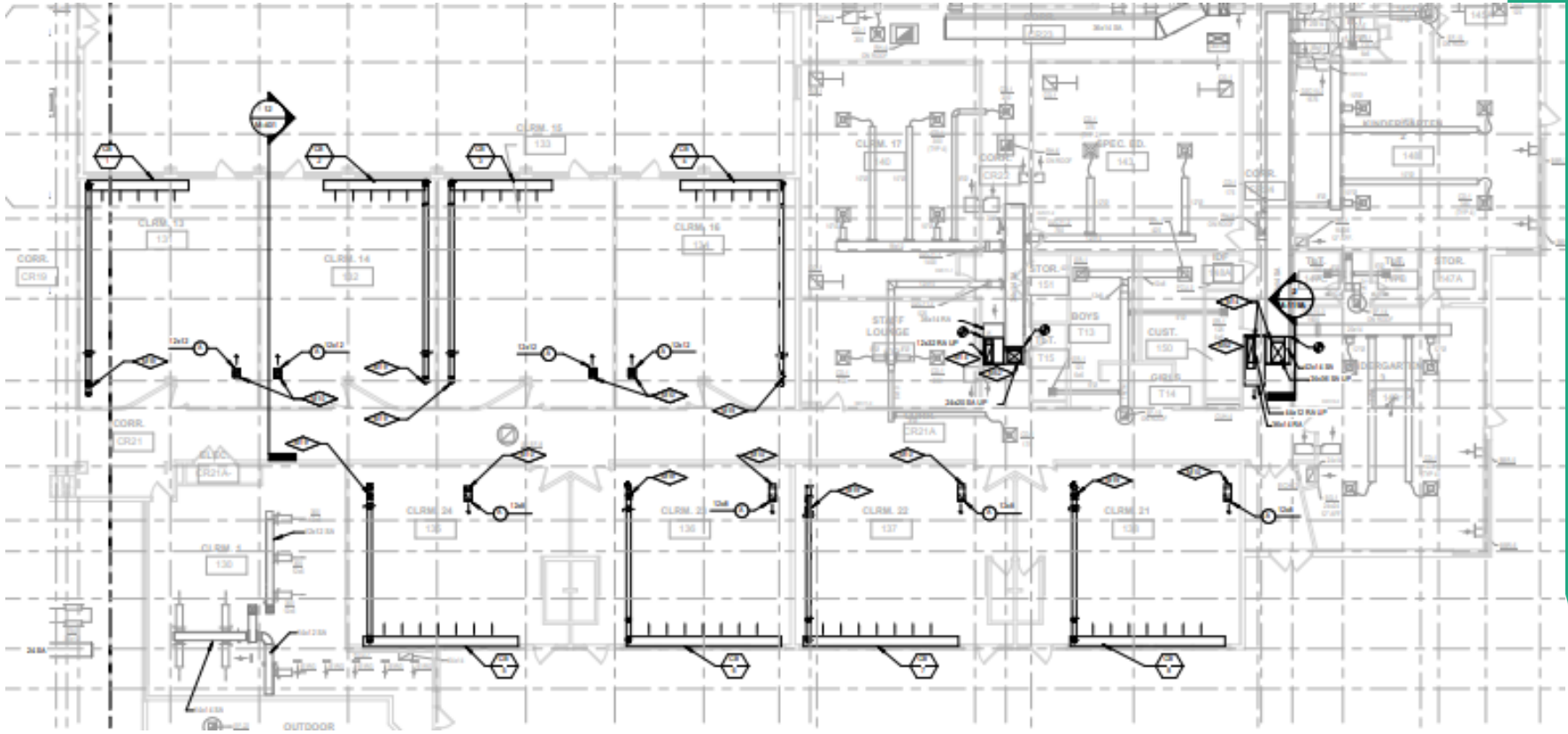
SCHEMATIC PLAN

- A LOCKED DOOR W/ ENTRY CONTROL
- B SECURE TRANSACTION WINDOW
- C LOCKED DOOR W/ ENTRY CONTROL
- D DOOR TO RECEPTION W/ CARD READER
- - - -> PATH OF TRAVEL
- SECURITY CHECKPOINT
- WORKSTATION

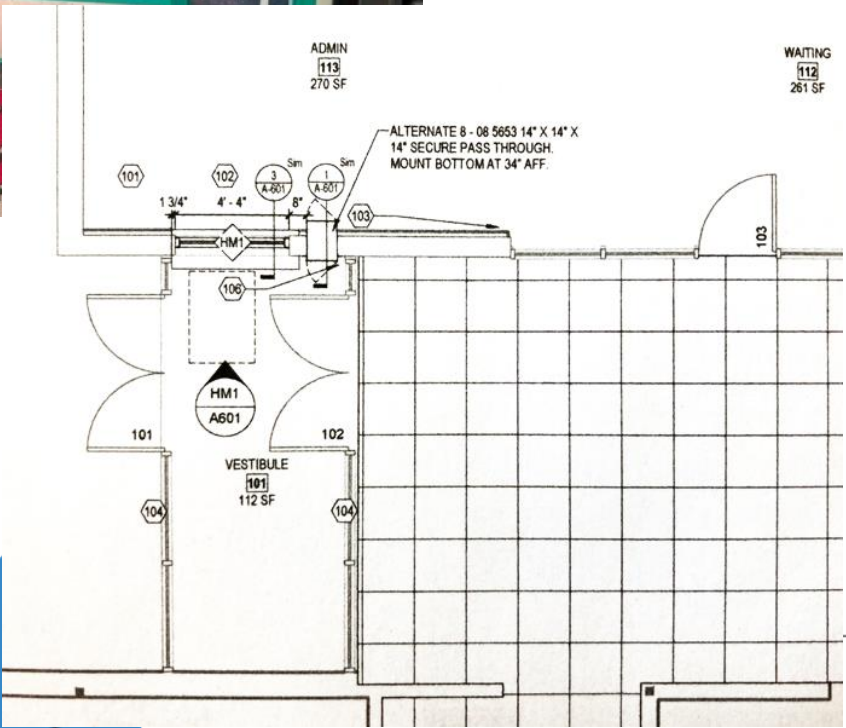


Fairmount ES – Efficiency Future Ready Eidos / Cator Ruma – GTC

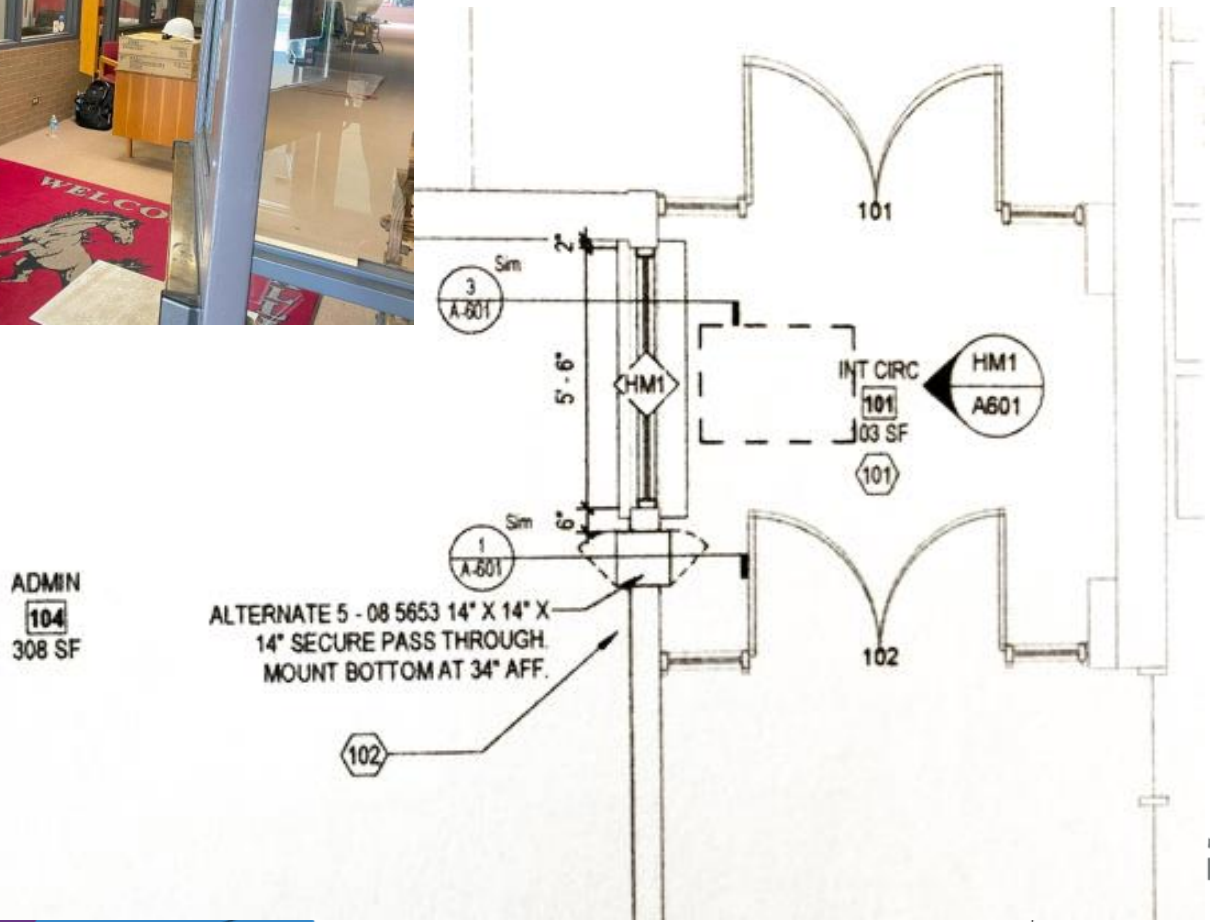
Construction



Bradford North – Efficiency Future Ready MOA – Mark Young

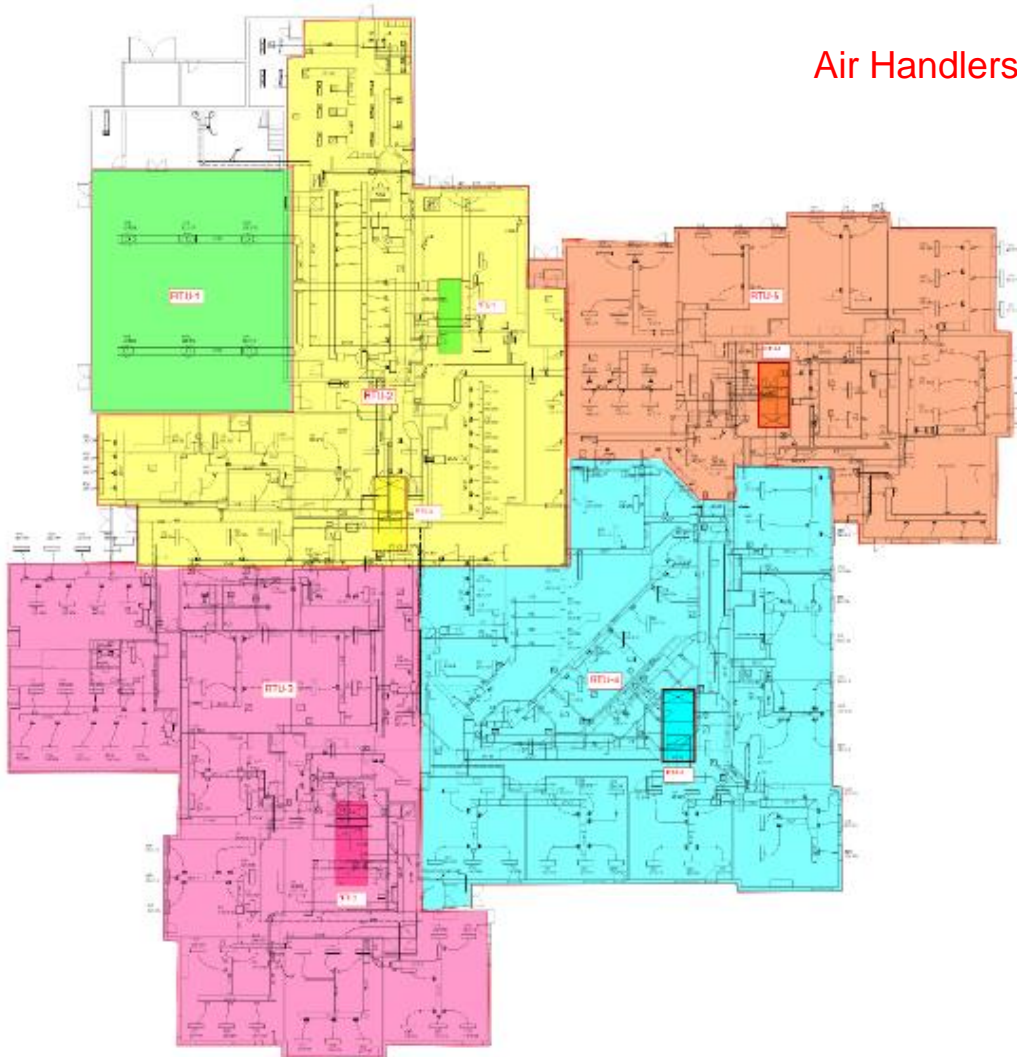


Bradford South – Efficiency Future Ready MOA – Mark Young



DW Mechanical 2023 Bradford South (RTU's, Controls), Columbine – CMGC Himmelman

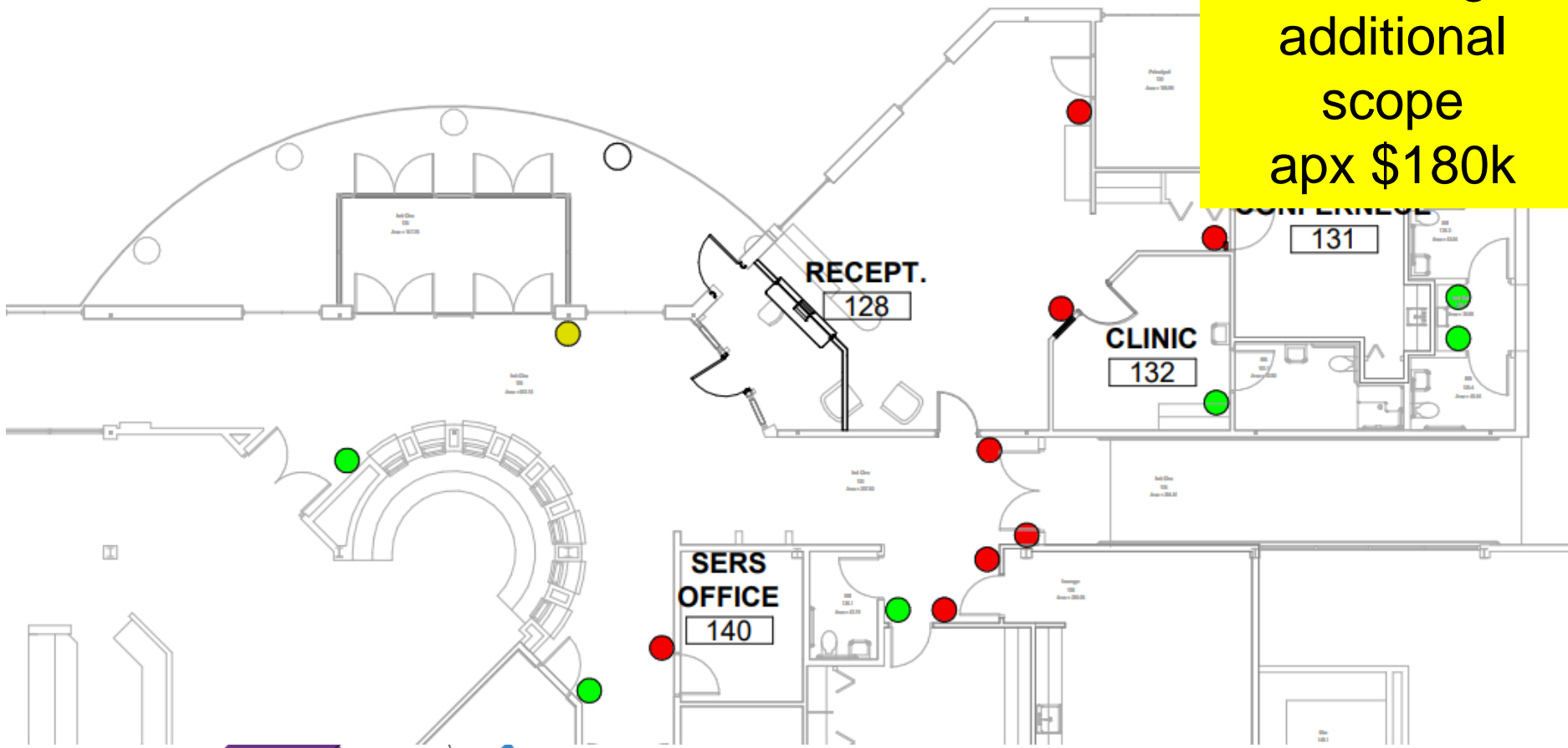
Air Handlers have been delivered



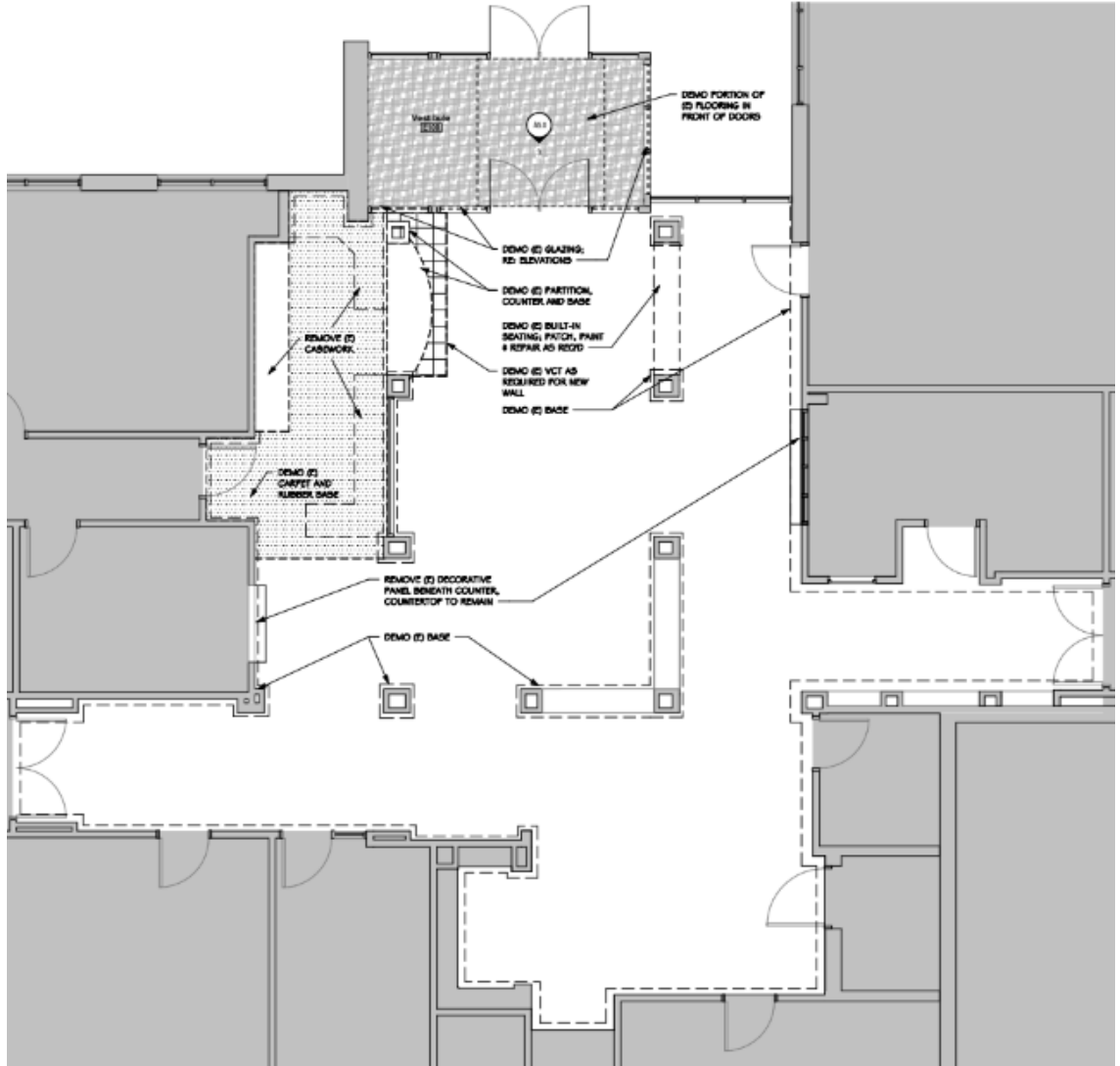
Free Horizon – Efficiency Future Ready HCM – Single Track

Construction

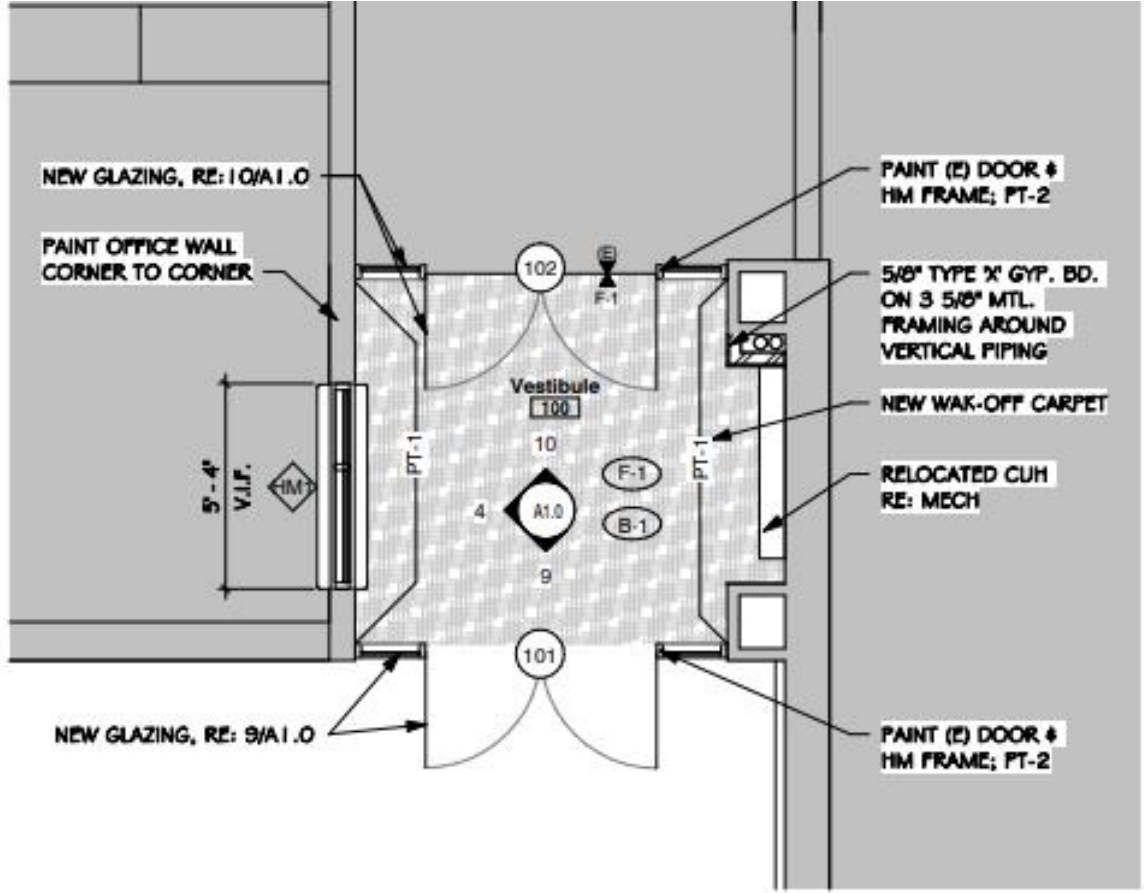
School
Funding
additional
scope
apx \$180k



McLain HS – Efficiency Future Ready Eidos – Single Track



Rooney Ranch ES – Efficiency Future Ready Eidos – Single Track



2. Main Level Floor Plan

1/4" = 1'-0"

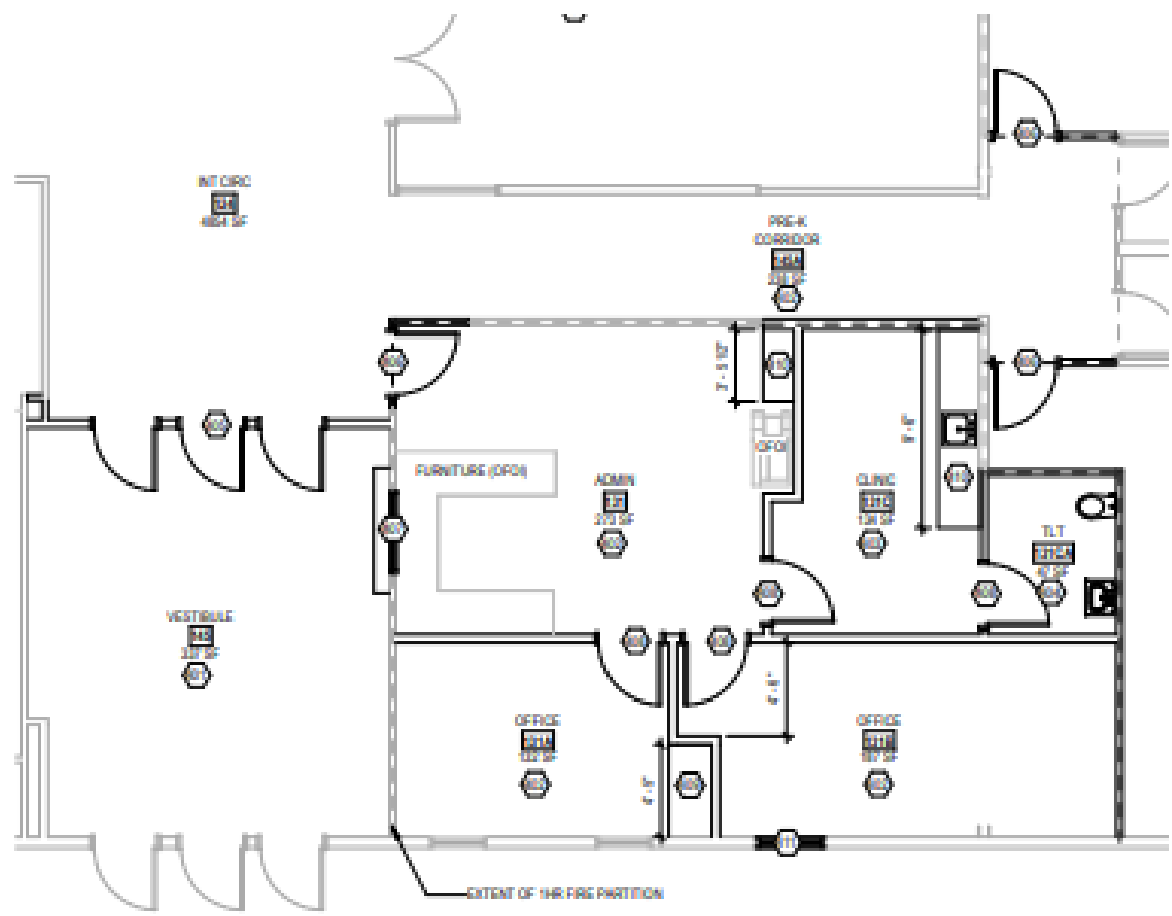
1'-6"

1'-6"



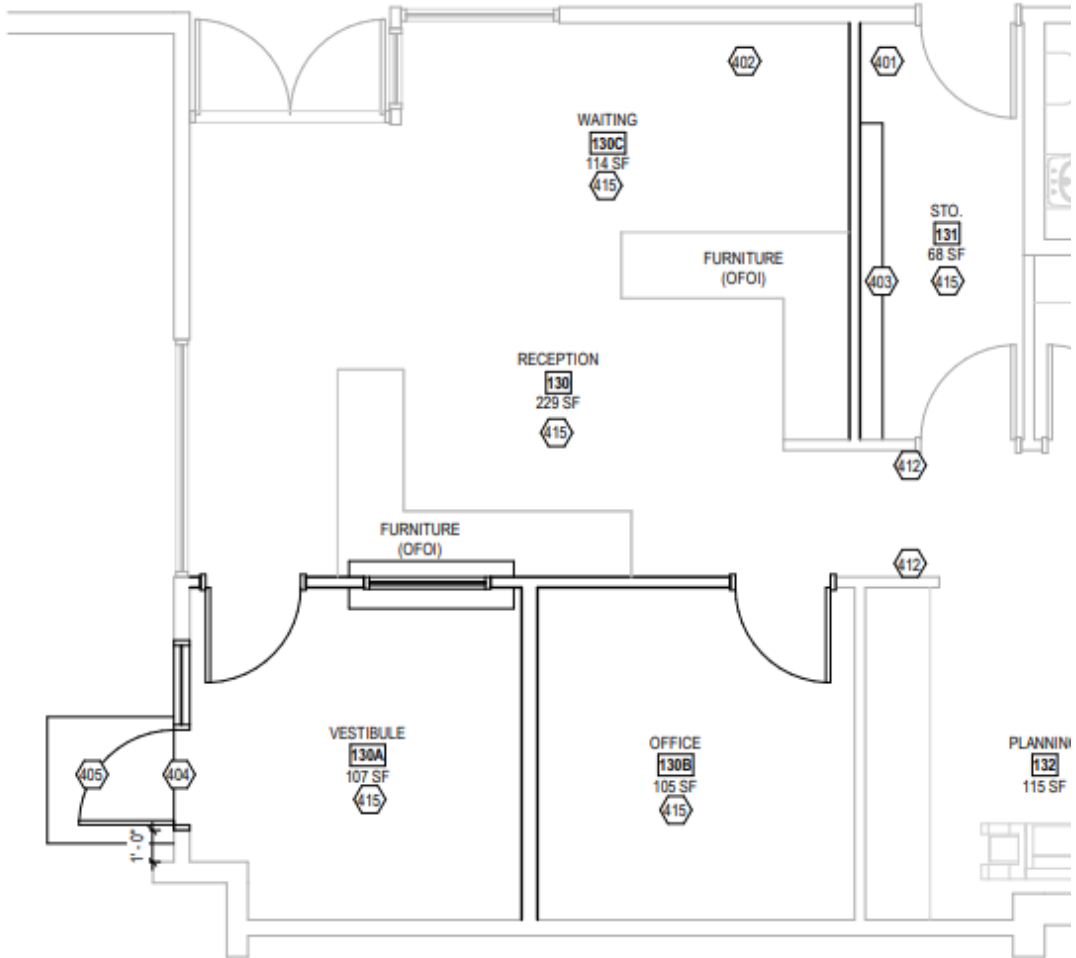
Leawood ES – Efficiency Future Ready MOA – TBD

Construction

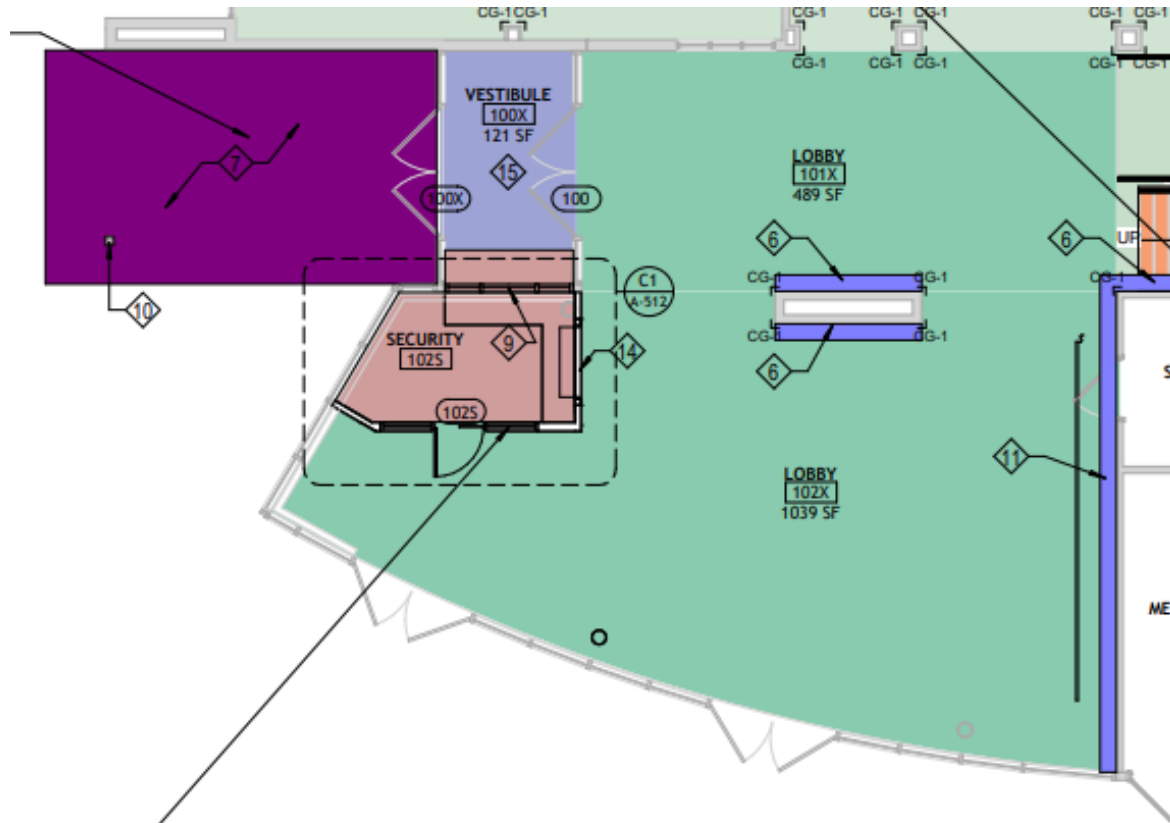


Normandy ES – Efficiency Future Ready MOA – TBD

Construction



Warren Tech Central Efficiency Future Ready HCM – TBD



Security Glass Installation

Adams

Arvada West HS

Bell Middle

Belmar

Bradford North

Bradford South

Deane

Devinny

Evergreen High

Fairmount

Long View High

Lukas

Manning

McLain

Mount Carbon

Elementary

Normandy

Ralston

Elementary

Rooney Ranch

Semper

Three Creek K-8

Wayne Carle MS

West Woods

Elementary

Wilmot



DW LED 2024 Ackerman



Construction Documents

1. Alameda International Jr./ Sr.
2. Arvada HS
3. Hackberry Hill Elementary
4. Manning Option School
5. Conifer High
6. Bear Creek High
7. Lakewood High
8. Belmar Elementary
9. Coronado Elementary
10. Jefferson Jr./Sr. High
11. Standley Lake High
12. Lukas Elementary
13. Ralston Valley High
14. Warren Tech North
15. Wayne Carle Middle
16. Dutch Creek Elementary

FF&E 2024

Bergen Valley ES FF&E

Edgewater ES FF&E

Falcon Bluffs MS FF&E

Long View HS FF&E ()

South Lakewood ES FF&E

Westridge ES FF&E

Evergreen HS FF&E

Oberon MS FF&E ()

Mandalay MS FF&E

Stober MS FF&E



2023 Policy Projects

Regional Opportunities for Thriving Schools – BOE Nov 10, 2022

Capital Investments for Thriving Schools - BOE Jun 08, 2022

Healthy & Equitable Start Times - BOE Mar 03, 2022

School Closings & Consolidations

Resolution: Board of Education Decision on Staff
Recommendation Regional Opportunities for Thriving Schools
Thursday, November 10, 2022

Construction
Move-In
March 4

Stober ES (5CR Addition + Kitchen) LOA & CMGC GTC



School Closings & Consolidations

Construction

Resolution: Board of Education Decision on Staff
Recommendation Regional Opportunities for Thriving Schools
Thursday, November 10, 2022

Stober ES (5CR Addition + Kitchen) LOA & CMGC GTC



School Closings & Consolidations

Construction

Resolution: Board of Education Decision on Staff
Recommendation Regional Opportunities for Thriving Schools
Thursday, November 10, 2022

Stober ES (5CR Addition + Kitchen) LOA & CMGC GTC



School Closings & Consolidations

Construction

Resolution: Board of Education Decision on Staff
Recommendation Regional Opportunities for Thriving Schools
Thursday, November 10, 2022

Bergen Valley ES - 10 CR - EUA & GC Crossland



School Closings & Consolidations

Construction

Resolution: Board of Education Decision on Staff
Recommendation Regional Opportunities for Thriving Schools
Thursday, November 10, 2022

Bergen Valley ES - EUA & GC Crossland



Healthy & Equitable Start Times

Start Times Next Steps

BOE Mar 03 2022

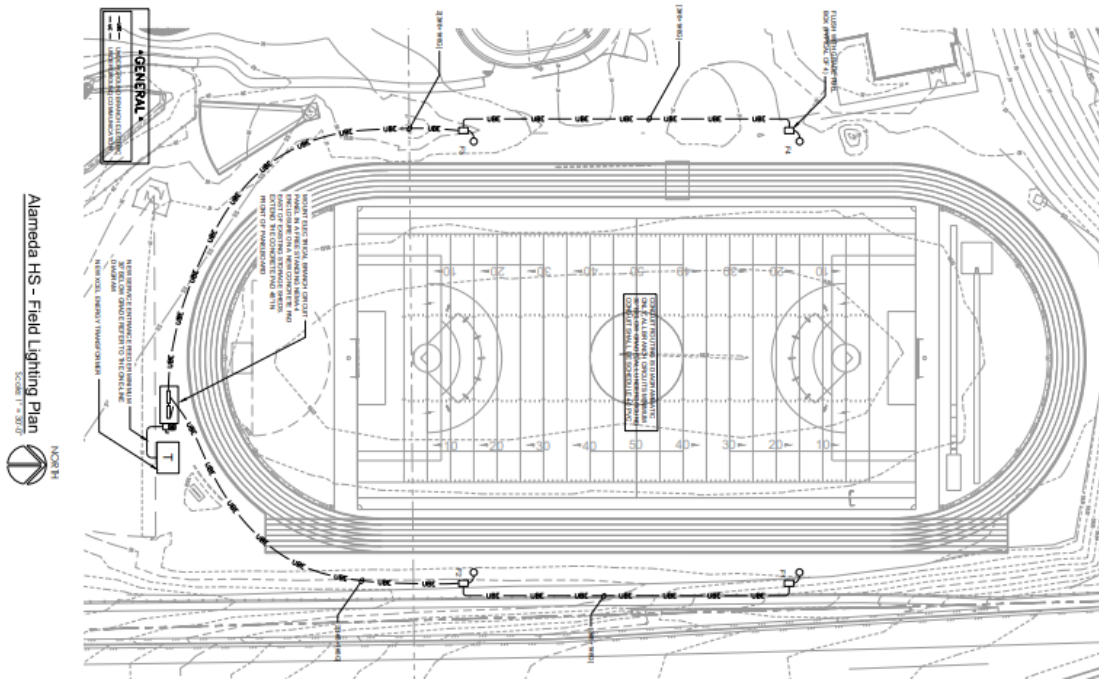
High School Athletic Field Lighting

Engineer Ackerman – CMGC Himmelman

Address challenges related to athletics and activities.

Construction

Material Deliveries
End of April



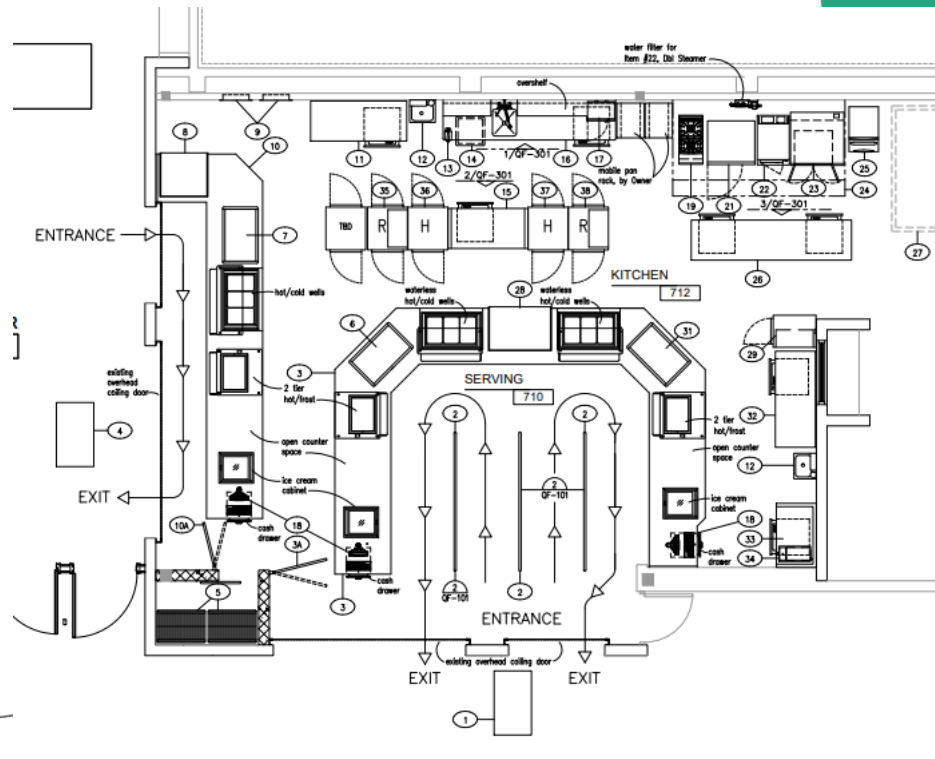
- Alameda International High School 4/1
- Arvada High School 4/15
- Arvada West High School 4/22
- Bear Creek High School 4/22
- Chatfield High School 4/1
- Columbine High School 3/25
- Dakota Ridge Senior High School 3/18
- D'Evelyn Junior/Senior High School 4/8
- Golden High School 4/8
- Green Mountain High School 4/15
- Jefferson High School 4/8
- Lakewood High School 3/18
- Pomona High School 4/1
- Ralston Valley Senior High School 3/25
- Standley Lake High School 3/18
- Wheat Ridge High School 3/25

6-12 Reconfiguration Pomona HS HCM – Himmelman

BOE Jun 22, 2023 - Regular Meeting

- a. Effective July 1, 2024, Moore Middle School will close; and
- b. The Moore Middle School and Pomona High School boundary attendance areas will be combined; and
- c. Pomona High School will be reconfiguring into a 6-12 school;

Construction
FNS Funded
Change Order
\$642,853
BOE
Consent Agenda
Tonight



Arvada K-8 Closure Implications North Arvada MS

Construction

Eidos – SCS

BOE Oct 12, 2023 – Regular Meeting

Effective July 1, 2024, Arvada K-8 will close and combine its boundary with Lawrence Elementary school for grades K-5 and with North Arvada Middle school for grades 6-8.

BOE Aug 24, 2023 - Special Meeting- Study/Dialogue Session

Regional Opportunities for Thriving Schools Phase II
October 12: Board of Education vote. Closure Arvada K8

North Arvada Middle School - (evaluate apx. 13 rooms) may need minimal, one-time facilities modifications in the range of \$300-500K in order to move existing programs to welcome new boundary students.

North Arvada Middle School

November 08, 2023



Lower Level Floor Plan

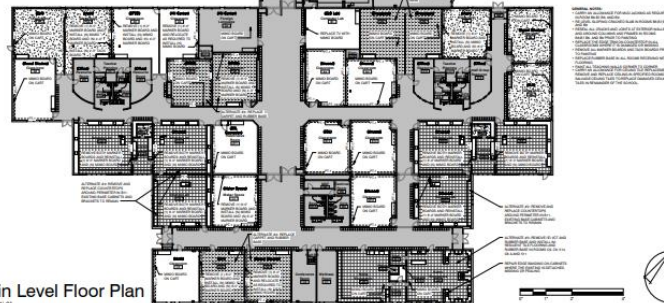
1/8" = 1'-0"



A. Potential Science Elevation



A. Potential Classroom Elevation A



Main Level Floor Plan

1/8" = 1'-0"



Arvada K-8 Closure Implications Lawrence ES

Construction

Eidos – Bryan

BOE Oct 12, 2023 – Regular Meeting

Effective July 1, 2024, Arvada K-8 will close and combine its boundary with Lawrence Elementary school for grades K-5 and with North Arvada Middle school for grades 6-8.

**BOE Aug 24, 2023 - Special Meeting-
Study/Dialogue Session**

Regional Opportunities for Thriving Schools Phase II
October 12: Board of Education vote. Closure Arvada K8

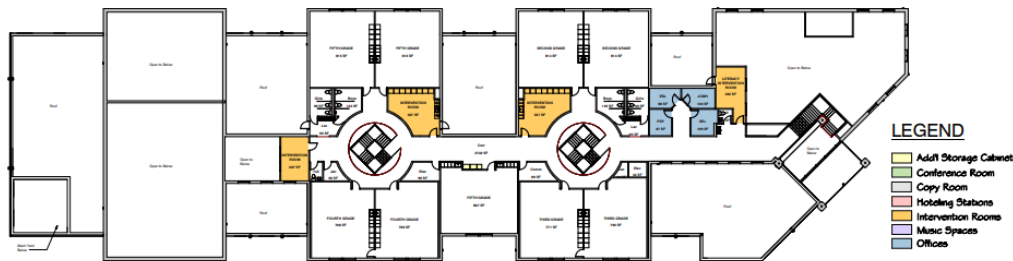
**Lawrence Elementary - (evaluate ap. 14 Rooms /
Storage Needs)** may need minimal, one-time, facilities
modifications in order to welcome new boundary students,
comparable to modifications made to similarly-sized
elementary schools welcoming students as part of Phase I of
ROFTS at a cost of ~\$675K

Lawrence ES Renovations

October 16, 2023



1. Main Level Floor Plan SD



2. Upper Level Floor Plan SD



Fletcher Miller Special School New Facility @ Current Site

Construction
Documents

MOA – GC TBD

BOE Jun 07, 2023 - Special Meeting-Study/Dialogue Session
Funding TBD Fall 2023



Fletcher Miller Special School New Facility @ Current Site

Construction
Documents

MOA – GC TBD

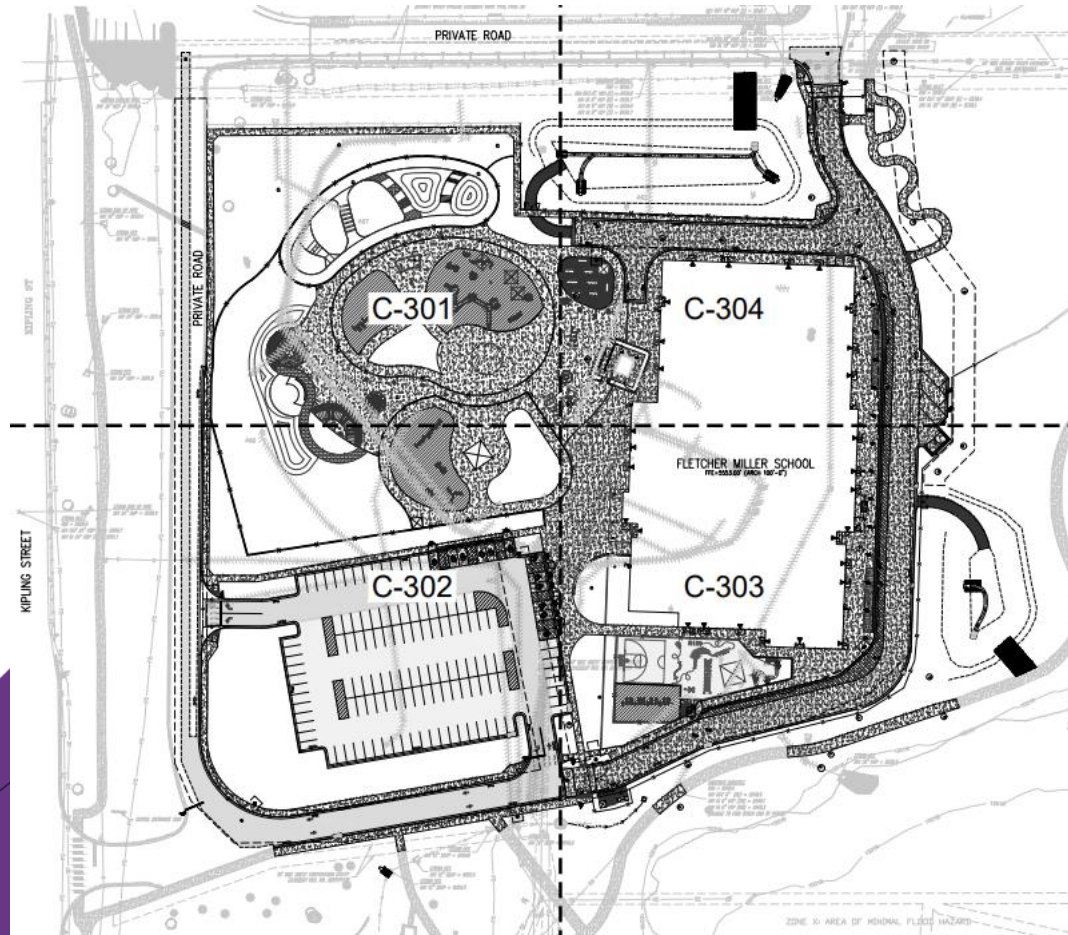
BOE Jun 07, 2023 - Special Meeting-Study/Dialogue Session
Funding TBD Fall 2023



Fletcher Miller Special School New Facility @ Current Site

MOA – GC TBD

BOE Jun 07, 2023 - Special Meeting-Study/Dialogue Session
Funding TBD Fall 2023



Fletcher Miller Special School New Facility @ Current Site

Construction
Documents

MOA – GC TBD

BOE Jun 07, 2023 - Special Meeting-Study/Dialogue Session
Funding TBD Fall 2023



Fletcher Miller Special School New Facility @ Current Site

Construction
Documents

MOA – GC TBD

BOE Jun 07, 2023 - Special Meeting-Study/Dialogue Session
Funding TBD Fall 2023



2024 General Capital Projects

40

Stride Clinic @ Alameda International Jr/Sr High

Grand Opening
3/4/24

Jordin – Haselden



DW FA Upgrades (Voice Evac) D'Evelyn & Pomona TLH Fire – Weifield Group

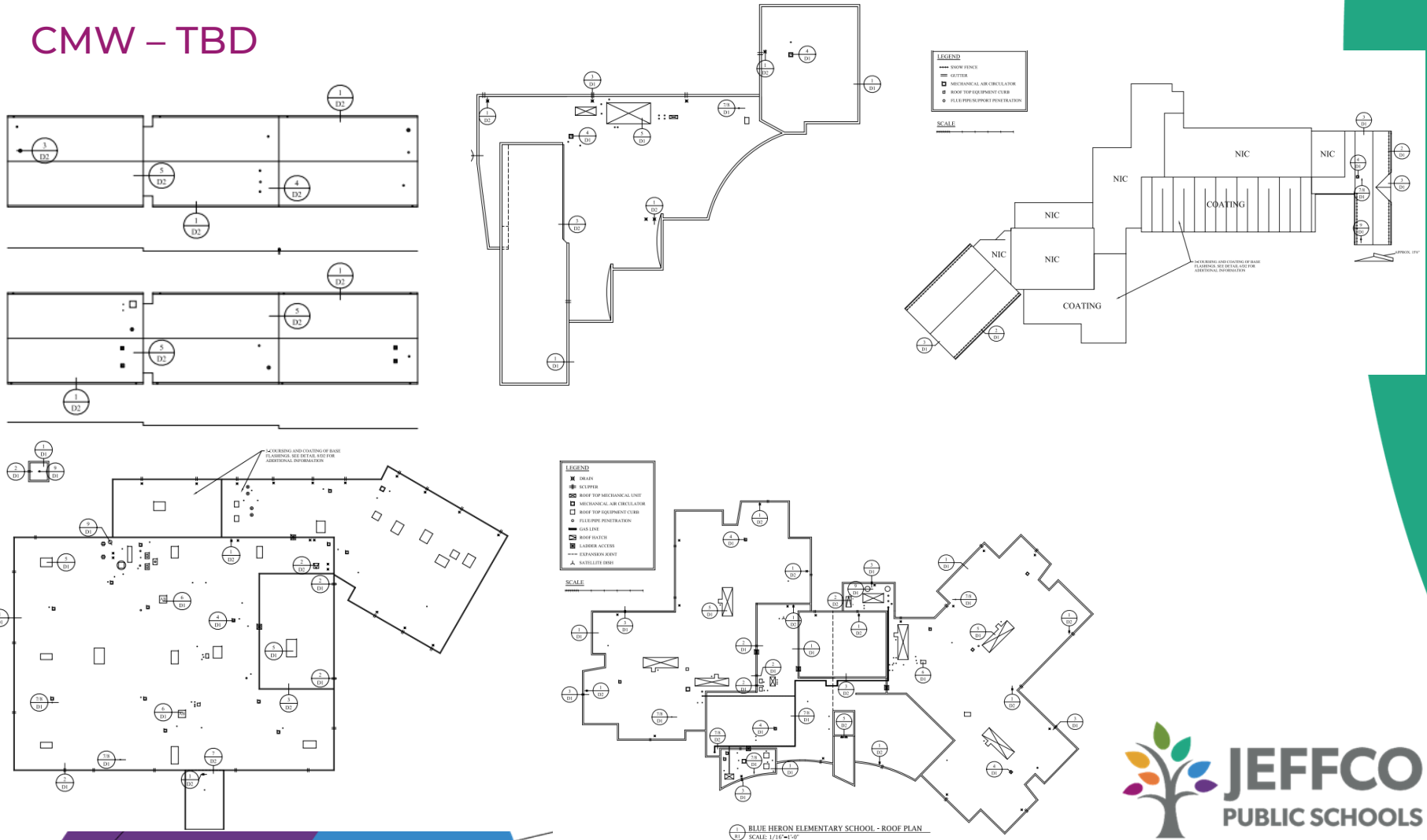
Construction
Summer 2024



DW Hail Damage – 5 schools Red Rocks, Columbine HS, Parmalee, Leawood, Blu Heron

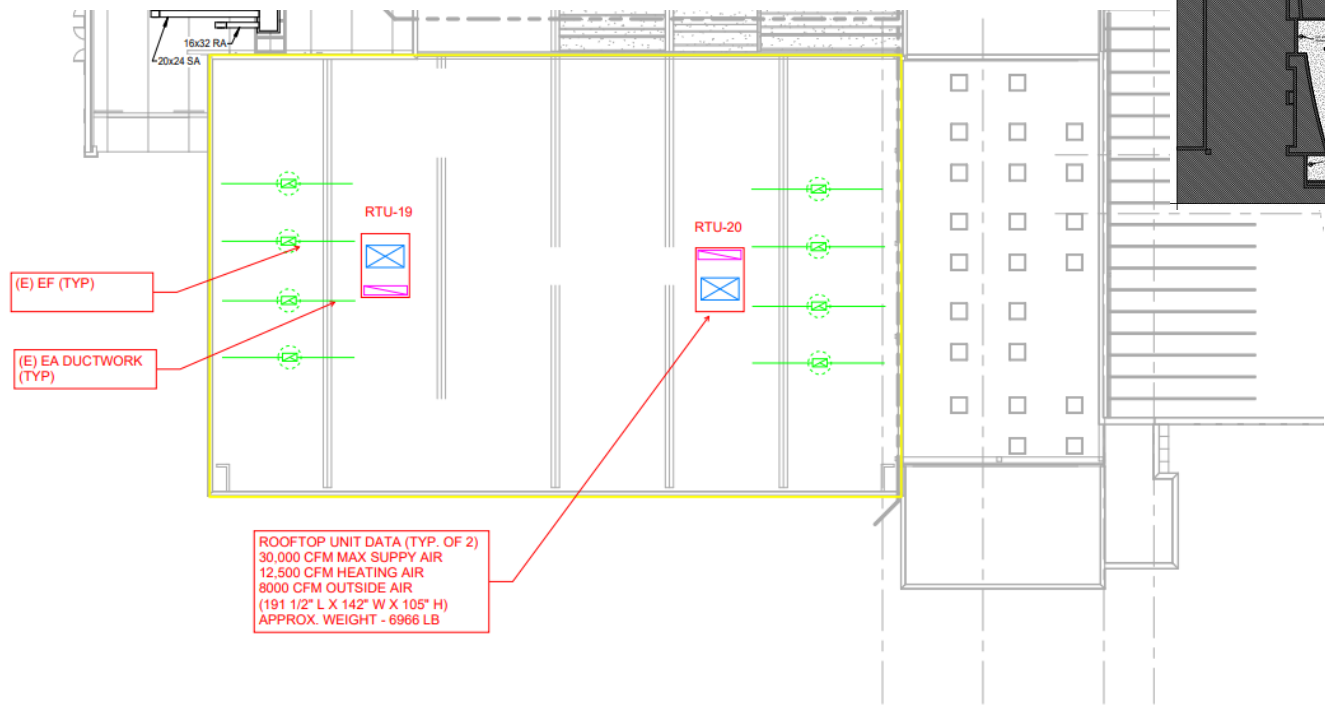
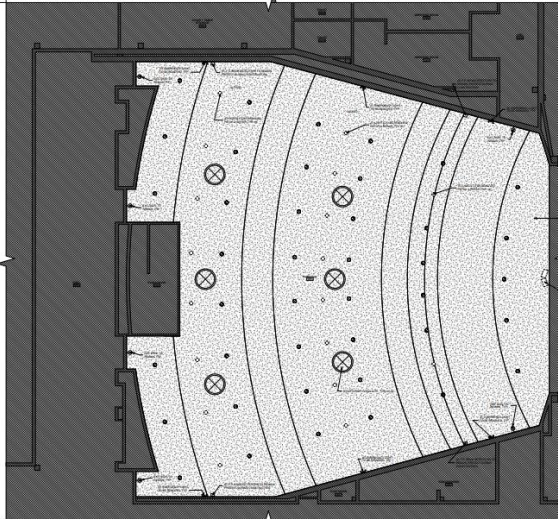
Bids 2/15/24

CMW – TBD



Alameda HS Gym AHU & Auditorium Air Conditioning

Cator Ruma – TBD



OPTION 1: (2) 30K CFM ROOFTOP UNITS

MECHANICAL ROOF PLAN
SCALE: 1" = 20'-0"



DW – Fire Department Violations Westminster

Schematic
Design

Wayne Carle MS (Stage),
Mandalay MS (Elect Room),
Standley Lake HS - (West-1st & 2nd floor sprinklers)

BCER – TBD



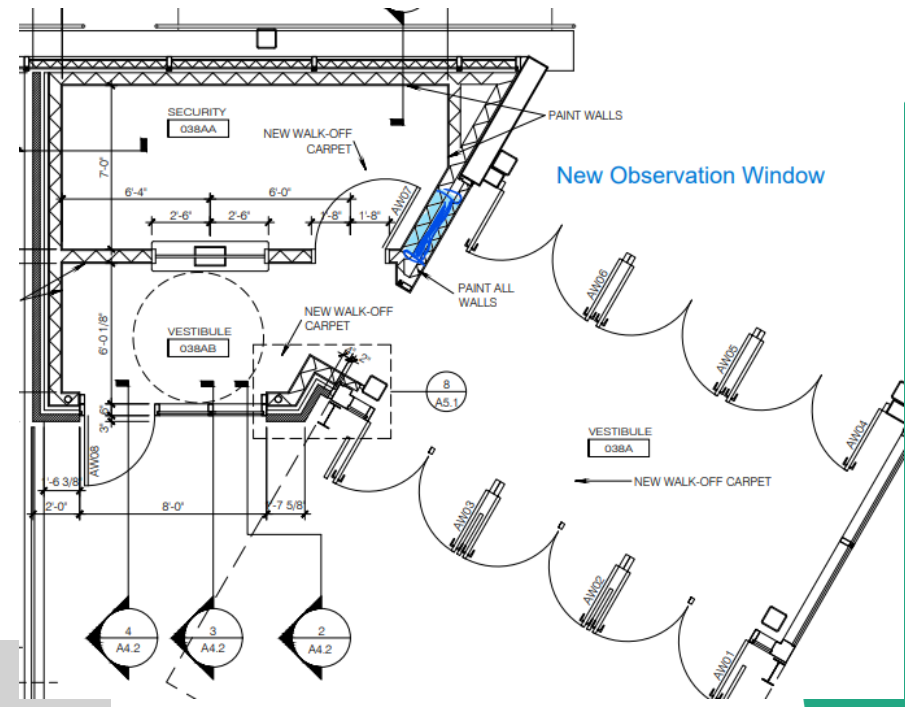
Trailblazer - Turf Replacement (Failed GMAX Test)

Schematic
Design

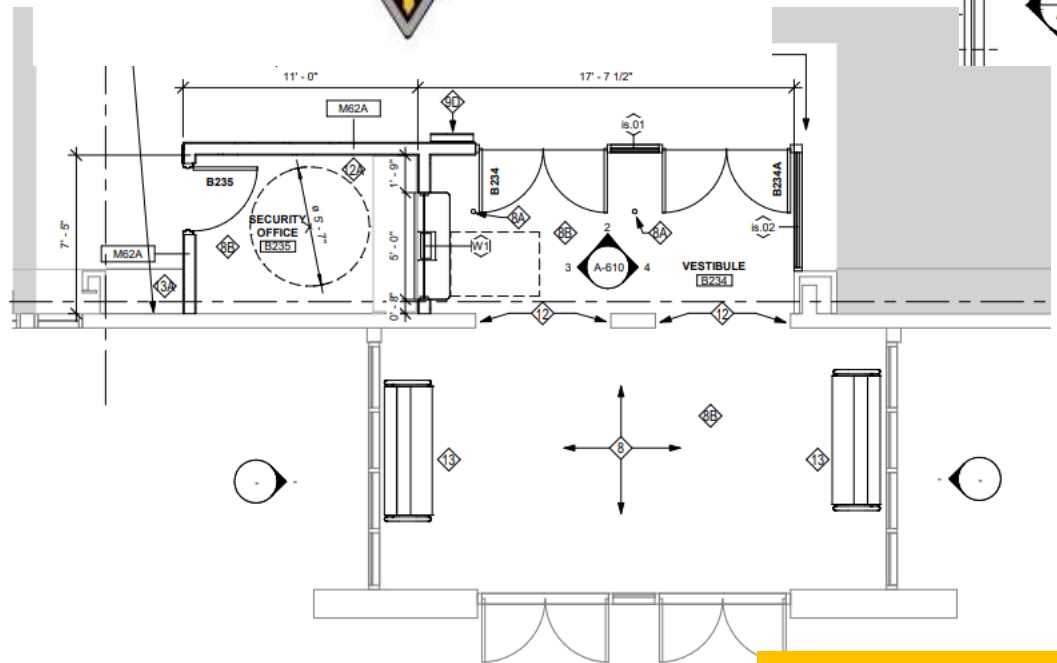
HCM – TBD



Safety and Security



ARVADA WEST HS



**ARVADA HS
Bids 2/15/24**

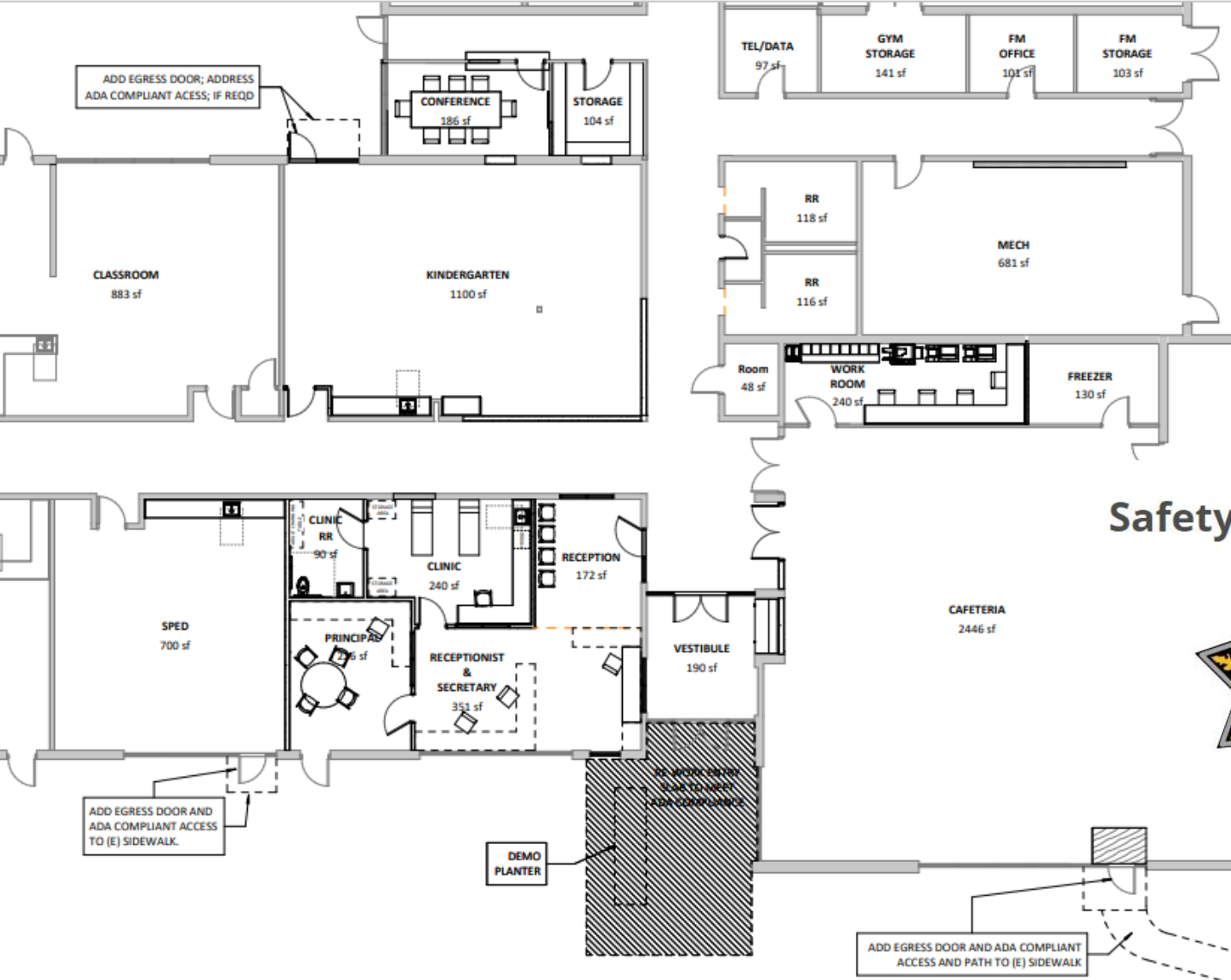


Columbine Hills ES – Secure Entry RB+B – GTC

Bid 2/8
\$823,700

Estimate
\$969,266

\$145,566
Below
Estimate



Safety and Security



North Transportation Office Renovation

TBD – TBD



Creighton MS East – West Lot Connection

Pre-Design

TBD – TBD



BOE Construction Agenda Items

February 15, 2024

Pomona 6-12 Reconfiguration CO FNS – Himmelman \$642,853

Next Meeting 3/21/24